



Port & Company® Ladies Long Sleeve Core Cotton Tee. LPC54LS



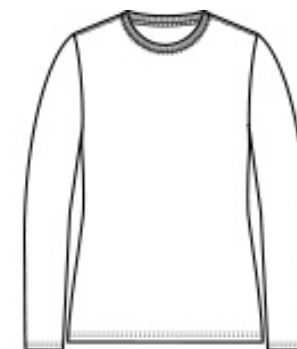
An indispensable t-shirt in our classic silhouette--with a very friendly price.

- 5.4-ounce, 100% cotton
- 90/10 cotton/poly (Athletic Heather)
- 50/50 cotton/poly (Dark Heather Grey, Heather Navy, Neon Pink)
- Side seamed with a contoured body for a feminine fit
- Open hem cuffs
- Removable tag for comfort and relabeling

CARE INSTRUCTIONS

Machine wash cold, inside out with like colors, only non-chlorine bleach when needed. Tumble dry medium.

Medium/hot iron, do not iron decoration.

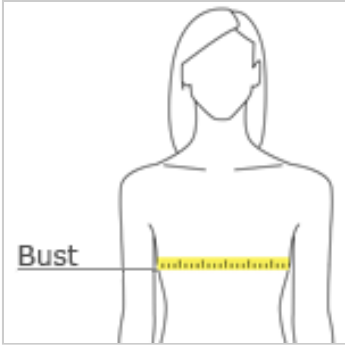


front



back

HOW TO MEASURE



BUST

Measure under the arm and around the fullest part of the bust with arms down, keeping tape horizontal.

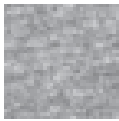
SIZE CHART

	XS	S	M	L	XL	XXL	3XL	4XL
Bust	32-34	35-36	37-38	39-41	42-44	45-47	48-51	52-55
Size	2	4/6	8/10	12/14	16/18	20/22	24/26	28/30

COLOR INFORMATION



Aquatic Blue
PMS 2389C



Athletic Heather
PMS COOL GRAY
7C



Athletic Maroon
PMS 209C



Candy Pink
PMS 189C



Charcoal
PMS COOL GRAY
11C



Dark Heather Grey
PMS 7540C



Jet Black
PMS NTR BLACK CPMS 340C



Kelly



Light Blue
PMS 278C



Navy
PMS 2380C



Purple
PMS 7672C



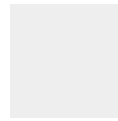
Red
PMS 200C



Royal
PMS 2133C



Sangria
PMS 2046C



White