

PORT AUTHORITY.

Port Authority® Nootka Jacket. J79

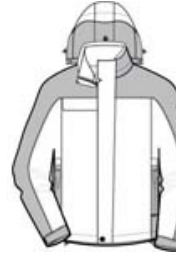


The Nootka people live in the Northwest where rainy, soggy days are the norm. That's why our Nootka Jacket is fully seam-sealed for superior waterproof protection. With the Nootka, you'll stay warm and dry, and look good too!

- 100% ripstop nylon shell with Taslan nylon accents
- 1500MM fabric waterproof rating
- Fully seam-sealed for added waterproof protection
- 6.8-ounce, 100% polyester sherpa fleece body lining
- Polyester sleeve lining for easy on/off
- Zip-off hood
- Storm flap
- Four zippered pockets
- Left sleeve zippered pocket
- Drop tail hem with locking drawcords for adjustability
- Port Pocket™ for easy embroidery access

CARE INSTRUCTIONS

Machine wash cold. Do not dry clean or iron. Tumble dry low.

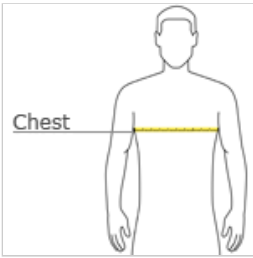


front



back

HOW TO MEASURE



CHEST WIDTH

Measure under the arm and around the fullest part of the chest with arms down, keeping tape horizontal.

SIZE CHART

	XS	S	M	L	XL	2XL	3XL	4XL
Chest	32-34	35-37	38-40	41-43	44-46	47-49	50-53	54-57

COLOR INFORMATION



Black/ Black



Bright Pistachio/
Graphite



Engine Red/ Black



Graphite/ Black



Regatta Blue/ Navy